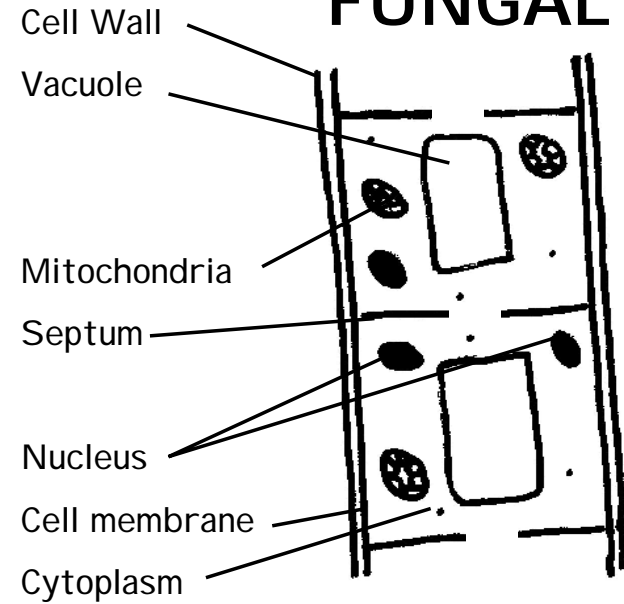


FILAMENTOUS FUNGAL CELL

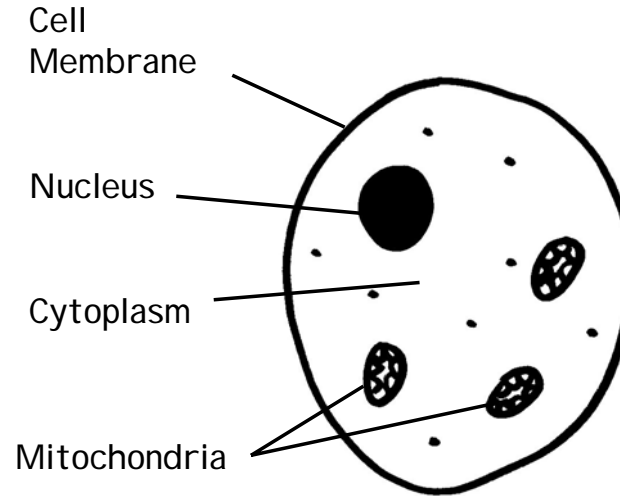
FC04
Revision

ANIMAL CELL



Defining Features:

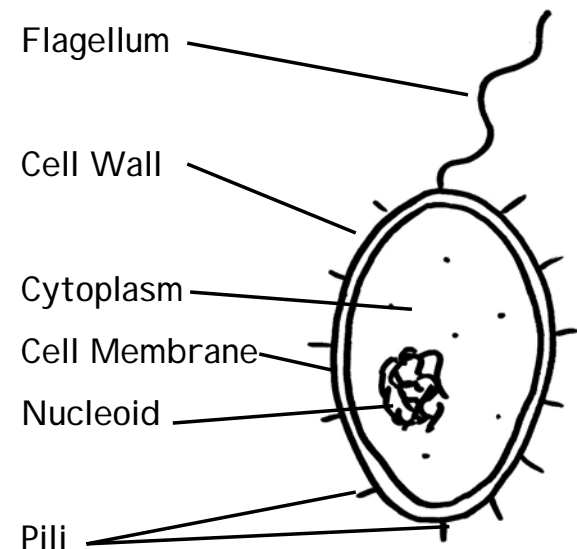
- * Cell Wall of chitin
- * Septum (separates cells, but has pore)
- * Several nuclei
- * Mitochondria
- * Vacuole
- * Apical, polarised growth



Defining Features:

- * No cell wall
- * Mitochondria
- * No chloroplasts
- * Animal cells move!

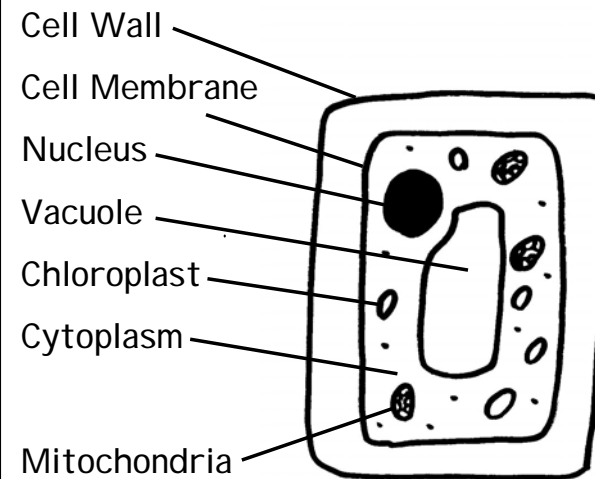
BACTERIAL CELL



Defining Features:

- * Cell Wall
- * No mitochondria
- * Nucleoid instead of nucleus
- * Some have pili
- * Some have flagellum
- * No chloroplasts

PLANT CELL



Defining Features:

- * Cell Wall of cellulose
- * Mitochondria
- * Chloroplasts
- * Vacuole

