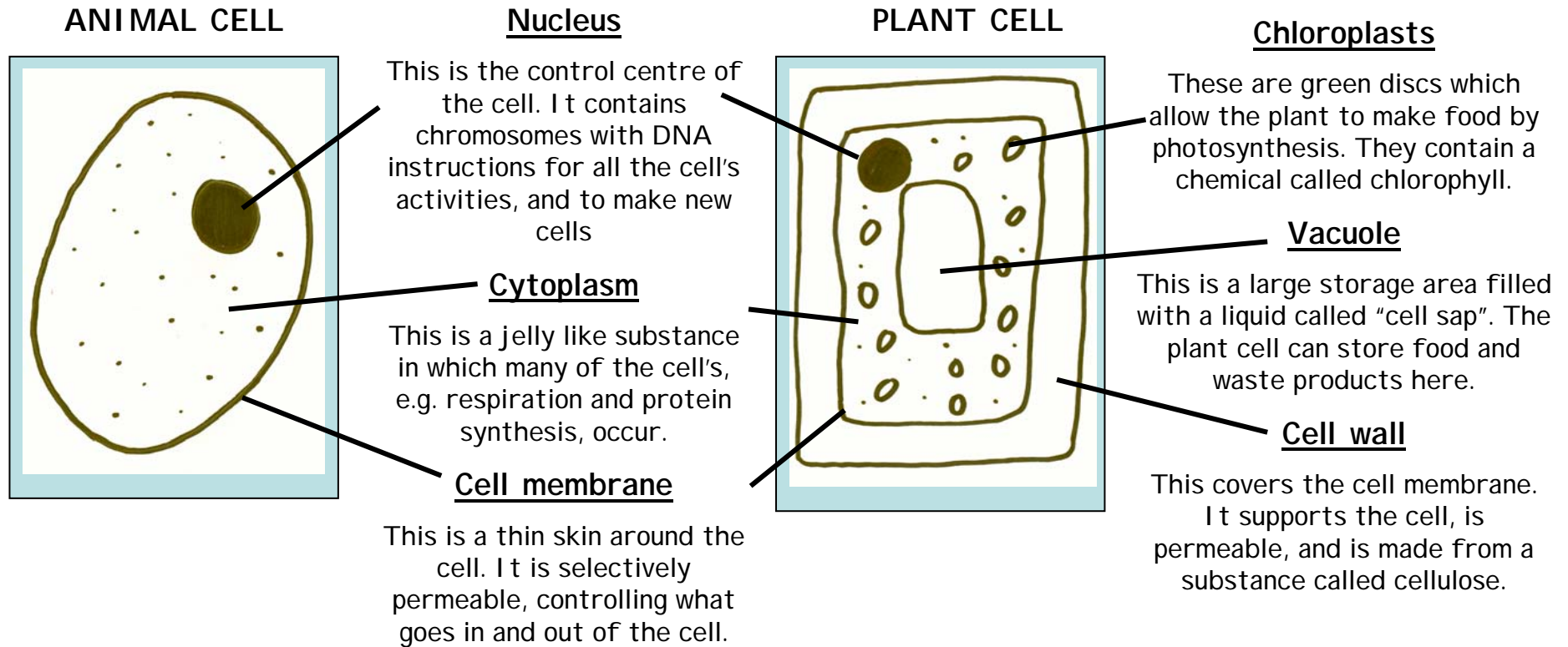
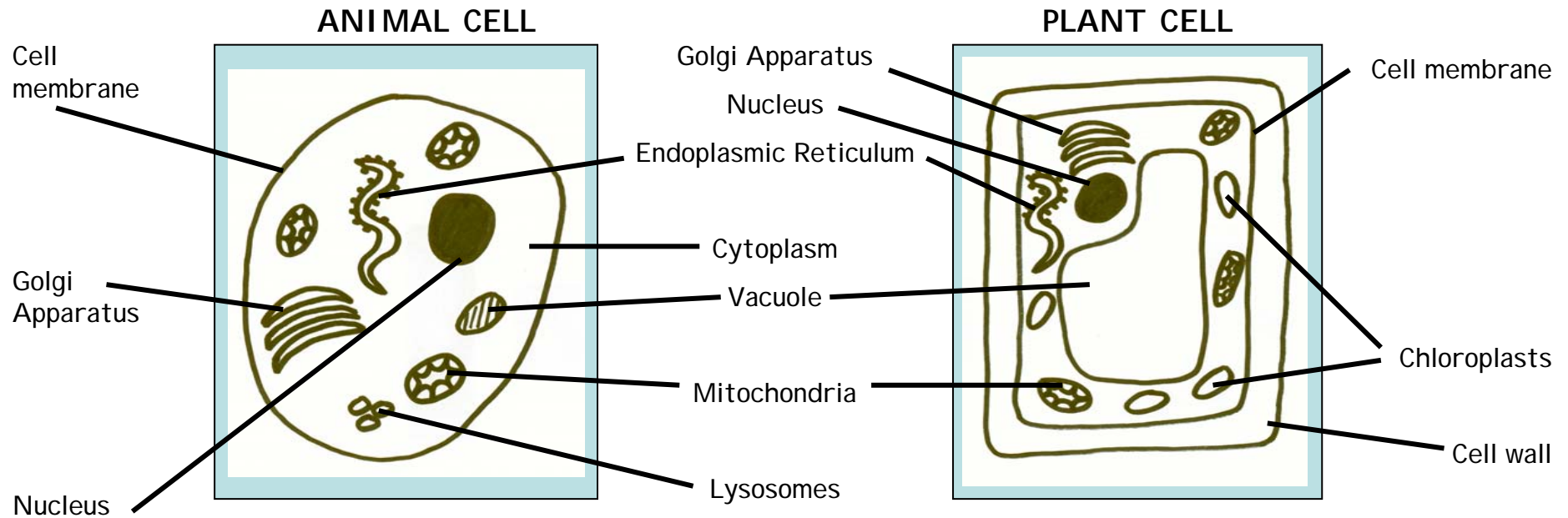


Animal and Plant Cells



Cells are tiny building blocks which make up all living things. Cells are so small that you need to use a microscope to see them.

Animal and Plant Cells



Definitions

Cell wall - Provides the cell with support. Contains a substance called Cellulose.

Chloroplasts - Green discs which allow the plant to photosynthesise. They contain a chemical called Chlorophyll.

Cytoplasm - Aqueous solution in which metabolic reactions occur.

Endoplasmic Reticulum - This acts as a transport system, sending proteins to the golgi.

Golgi Apparatus - Sorts and processes proteins and lipids which are then transported around the cell.

Lysosomes - These contain enzymes needed to destroy unwanted material in the cell.

Mitochondria - These are the power stations of the cells as they provide the cell with all the energy it needs through respiration.

Vacuole - This is a large storage place filled with a substance called "cell sap".